



*Changes for the Better*

OBSERVATION ELEVATORS

for a greener tomorrow



Quality  
inMotion 

ENJOY THE VIEW

2nd Edition

# Adding Drama and Fun to the Elevator Ride

Observation elevators make traveling between floors within a building a dramatic and exciting experience. Mitsubishi Electric's latest line-up of observation elevators builds on its most popular designs, and expands the view by adding even more window space. In addition, customers can mix and match components to create the ideal elevator for a particular building or purpose, whether it is hotel, mall or office, indoor or outdoor. A range of popular standard elevator types are also available, offering cost performance and proven quality. Any of the new models, component-type or standard, will add an exciting new dimension to elevator travel, with light, space and visible motion.

## C o n t e n t s

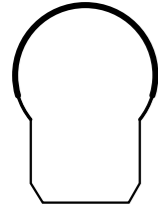
- 1-2 Introduction
- 3-10 Component Type
- 11-12 Standard Type
- 13-20 Actual Installation Examples
- 21-22 Installation List

# A Futuristic Capsule

INDOOR OPEN TYPE  
INDOOR/OUTDOOR ENCLOSED TYPE\*

## KY01A Round

### CAR SECTION



#### EXTERIOR (Car design example)

- Windows: Transparent curved glass (option: lightly tinted glass)
- Upper and lower shells: Fiber-reinforced plastic with painted finish (Y051)
- Mullions: Painted steel sheet (Y051)
- Decorative lighting: Globular, milky-white acrylic plate illuminated from inside, at shell top and bottom

#### INTERIOR (Car design example)

- Ceiling: Painted steel sheet (Y033)
- Lighting: Fluorescent lighting through circular, milky-white acrylic plate, and downlights
- Wall and doors: Stainless-steel, hairline-finish
- Handrail: Single line of hairline-finished stainless-steel pipe
- Mullions: Stainless-steel, hairline-finish

Car outline shows cage and window only. Other features have been omitted for clarity.

\* For Enclosed Type, it's needed to provide the carry-in entrance for outer panel at the shaft wall of observation side because it's unable to carry in the outer panel from hall side.

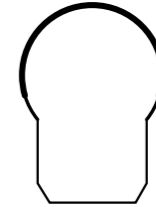


# A Bold Spaceship

INDOOR OPEN TYPE  
INDOOR/OUTDOOR ENCLOSED TYPE\*

## KY02A Round

### CAR SECTION



#### EXTERIOR (Car design example)

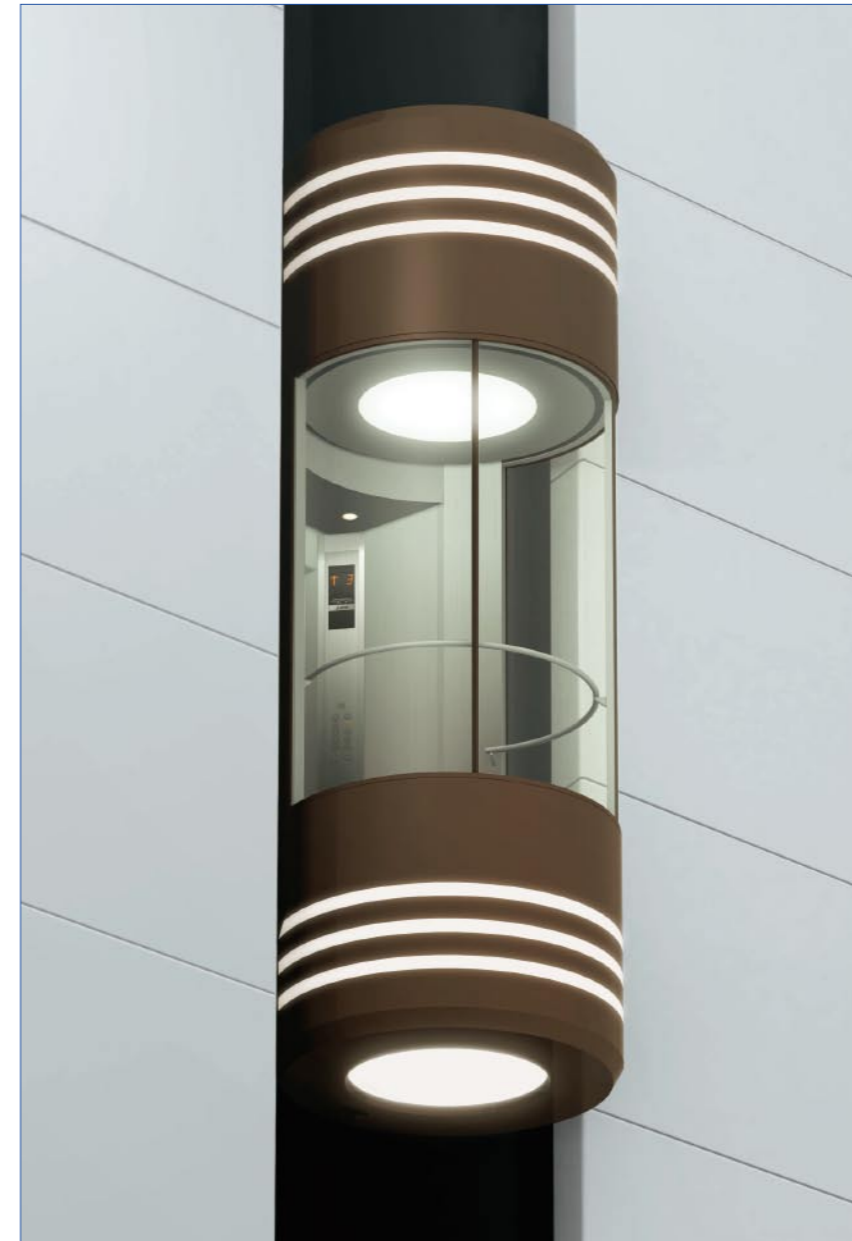
- Windows: Transparent curved glass (option: lightly tinted glass)
- Upper and lower shells: Fiber-reinforced plastic with painted finish (Y002)
- Mullions: Painted steel sheet (Y002)
- Decorative lighting: Three rings of milky-white acrylic plate illuminated from inside around upper and lower shells
- Shell top and bottom lighting: Circular, milky-white acrylic plate illuminated from inside

#### INTERIOR (Car design example)

- Ceiling: Painted steel sheet (Y033)
- Lighting: Fluorescent lighting through circular, milky-white acrylic plate, and downlights
- Wall and doors: Stainless-steel, hairline-finish
- Handrail: Single line of hairline-finished stainless-steel pipe
- Mullions: Stainless-steel, hairline-finish

Car outline shows cage and window only. Other features have been omitted for clarity.

\* For Enclosed Type, it's needed to provide the carry-in entrance for outer panel at the shaft wall of observation side because it's unable to carry in the outer panel from hall side.

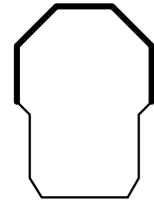


# An Airy Glass Cabin

INDOOR OPEN TYPE  
INDOOR/OUTDOOR ENCLOSED TYPE

## KY03A Octagonal

CAR SECTION



**EXTERIOR** (Car design example)

- Windows: Transparent flat glass (option: lightly tinted glass)
- Upper and lower shells: Painted steel sheet (Y054)
- Mullions: Painted steel sheet (Y054)
- Decorative lighting: Downlights at shell bottom

**INTERIOR** (Car design example)

- Ceiling: Painted steel sheet (Y033)
- Lighting: Downlights
- Wall and doors: Stainless-steel, hairline-finish
- Handrail: Single line of hairline-finished stainless-steel pipe
- Mullions: Stainless-steel, hairline-finish

Car outline shows cage and window only. Other features have been omitted for clarity.

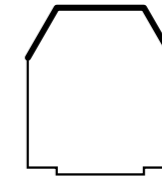


# A Modern Angular Design

INDOOR OPEN TYPE  
INDOOR/OUTDOOR ENCLOSED TYPE

## CY04A Clipped Corner

CAR SECTION



**EXTERIOR** (Car design example)

- Windows: Transparent flat glass (option: lightly tinted glass)
- Upper and lower shells: Painted steel sheet (Y004)
- Mullions: Painted steel sheet (Y004)
- Decorative lighting: Downlights

**INTERIOR** (Car design example)

- Ceiling: Painted steel sheet (Y033)
- Lighting: Downlights
- Wall: Stainless-steel, hairline-finish
- Handrail: Single line of hairline-finished stainless-steel pipe
- Mullions: Stainless-steel, hairline-finish

Car outline shows cage and window only. Other features have been omitted for clarity.

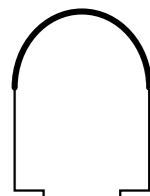


# A Cylindrical Pod

INDOOR OPEN TYPE  
INDOOR/OUTDOOR ENCLOSED TYPE

## HY05A Horseshoe

### CAR SECTION



#### EXTERIOR (Car design example)

- Windows: Transparent curved glass (option: lightly tinted glass)
- Upper and lower shells: Painted steel sheet (Y116)
- Mullions: Painted steel sheet (Y116)
- Decorative lighting: Downlights

#### INTERIOR (Car design example)

- Ceiling: Painted steel sheet (Y033)
- Lighting: Fluorescent lighting through circular, milky-white acrylic plate, and downlights.
- Wall and doors: Stainless-steel, hairline-finish
- Handrail: Single line of hairline-finished stainless-steel pipe
- Mullions: Stainless-steel, hairline-finish

Car outline shows cage and window only. Other features have been omitted for clarity.

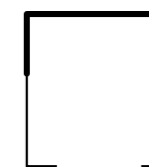


# A Stark Square Box

INDOOR OPEN TYPE  
INDOOR/OUTDOOR ENCLOSED TYPE

## SY06 Square

### CAR SECTION



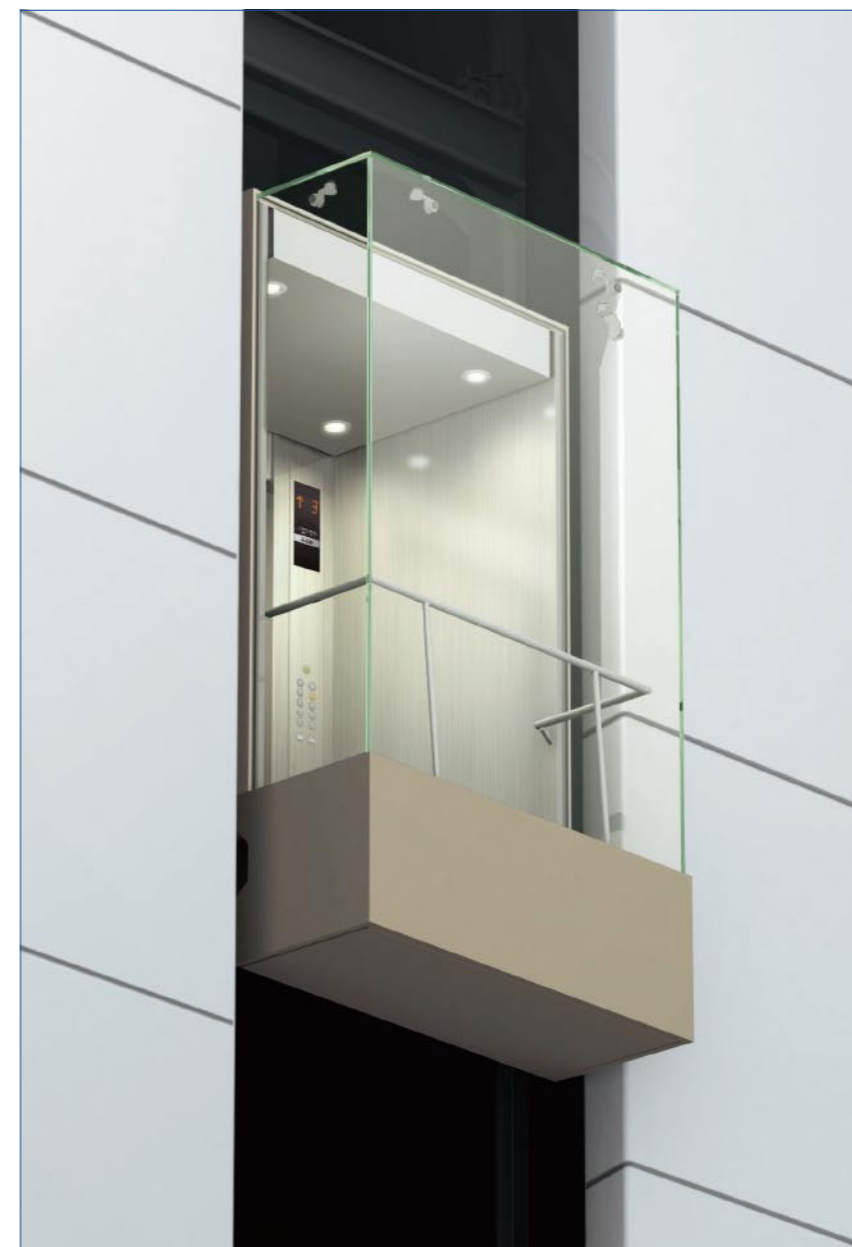
#### EXTERIOR (Car design example)

- Windows: Transparent flat glass (option: lightly tinted glass)
- Lower shell: Painted steel sheet (Y071)
- Mullions: None
- Decorative lighting: None

#### INTERIOR (Car design example)

- Ceiling: Painted steel sheet (Y033) and glass
- Lighting: Downlights
- Wall: Stainless-steel, hairline-finish
- Handrail: Single line of hairline-finished stainless-steel pipe
- Mullions: None

Car outline shows cage and window only. Other features have been omitted for clarity.



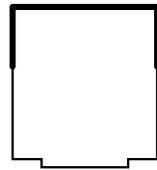
COMPONENT TYPE

# A Bright, Airy Box

INDOOR OPEN TYPE  
INDOOR/OUTDOOR ENCLOSED TYPE

## SY07 Square

CAR SECTION



**EXTERIOR** (Car design example)

- Windows: Transparent flat glass (option: lightly tinted glass)
- Upper and lower shells: Painted steel sheet (Y014)
- Mullions: None
- Decorative lighting: Downlights

**INTERIOR** (Car design example)

- Ceiling: Painted steel sheet (Y033)
- Lighting: Downlights
- Wall and doors: Stainless-steel, hairline-finish
- Handrail: Single line of hairline-finished stainless-steel pipe
- Mullions: Stainless-steel, hairline-finish

Car outline shows cage and window only. Other features have been omitted for clarity.



COMPONENT TYPE

# A Sleek, Narrow Window Design

OUTDOOR ENCLOSED TYPE

## SY08 Square

CAR SECTION



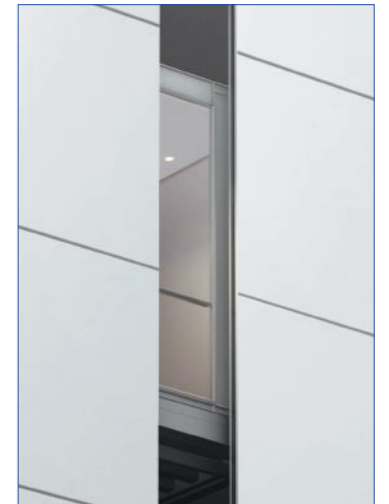
**EXTERIOR** (Car design example)

- Windows: 500mm width transparent flat glass (option: lightly tinted glass)
- Upper and lower shells: None
- Window frames: Anodized aluminum finish
- Decorative lighting: None

**INTERIOR** (Car design example)

- Ceiling: Painted steel sheet (Y033)
- Lighting: Fluorescent lighting through milky-white acrylic cover (basic design)
- Wall: Pattern-printed steel sheet (CP23)
- Handrail: Single line of hairline-finished stainless-steel pipe
- Kick-plate: Stainless-steel, hairline-finish
- Flooring: Vinyl tiles (PR803)

**OUTSIDE VIEW**



Car outline shows cage and window only. Other features have been omitted for clarity.

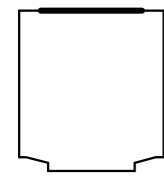
# A Simple, No-Frills Design

INDOOR/OUTDOOR ENCLOSED TYPE

## NY20B Square



CAR SECTION



**EXTERIOR** (Car design example)

- Windows: Transparent flat glass (option: lightly tinted glass)
- Upper and lower shells: Painted steel sheet (Y033)
- Window frames: Anodized aluminum finish
- Decorative lighting: None (available as an option)

**INTERIOR** (Car design example)

- Ceiling: Painted steel sheet (Y033)
- Lighting: Fluorescent lighting through milky-white acrylic cover (basic design)
- Front wall: Pattern-printed steel sheet (CP23)
- Handrail: Single line of hairline-finished stainless-steel pipe

Car outline shows cage and window only. Other features have been omitted for clarity.



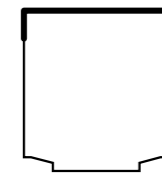
# Square Box

INDOOR/OUTDOOR ENCLOSED TYPE

## NY21B Square



CAR SECTION



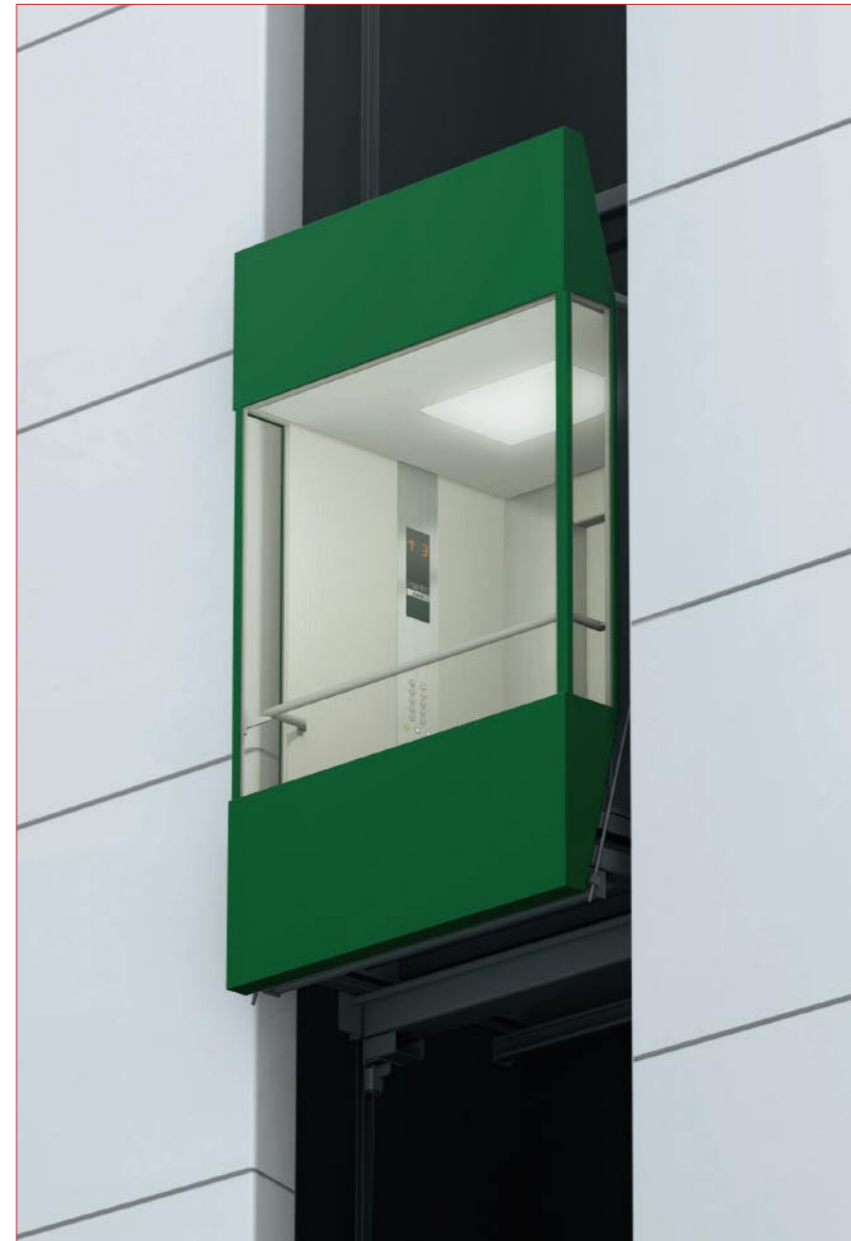
**EXTERIOR** (Car design example)

- Windows: Transparent flat glass (option: lightly tinted glass)
- Upper and lower shells: Painted steel sheet (Y006)
- Mullions: Painted steel sheet (Y006)
- Decorative lighting: None (available as an option)

**INTERIOR** (Car design example)

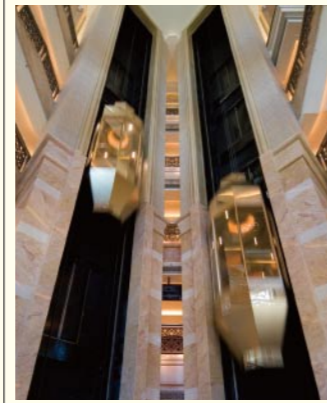
- Ceiling: Painted steel sheet
- Lighting: Fluorescent lighting through milky-white acrylic cover (basic design)
- Front wall and doors: Pattern-printed steel sheet (CP23)
- Handrail: Single line of hairline-finished stainless-steel pipe
- Mullions: Stainless-steel, hairline-finish

Car outline shows cage and window only. Other features have been omitted for clarity.

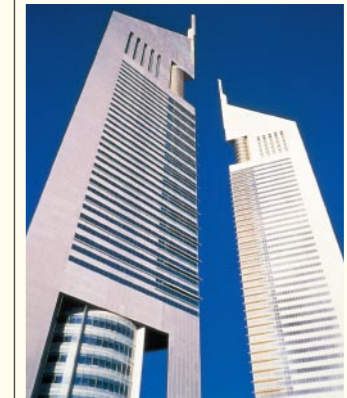


# Actual Installation Examples

**Abu Dhabi, UAE** | Emirates Palace Hotel



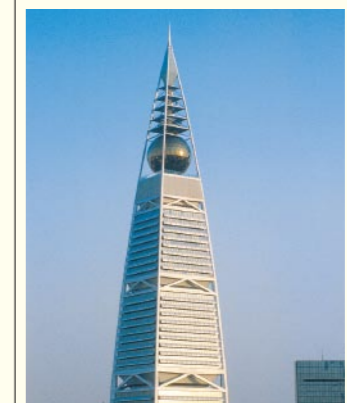
**Dubai, UAE** | Emirates Tower



**Doha, Qatar** | City Centre

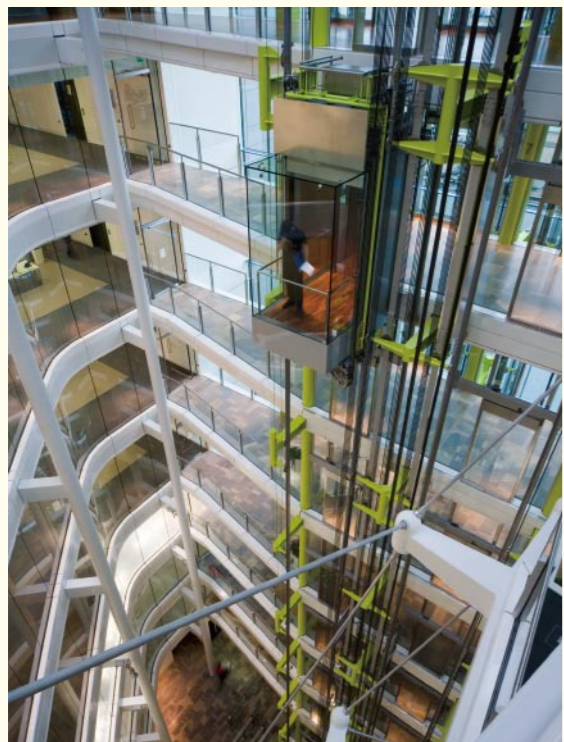


**Riyadh, Saudi Arabia** | Al Faisaliah Center



# Actual Installation Examples

**London, UK** | 100VE



**Bangkok, Thailand** | Siam Paragon



**Buenos Aires, Argentina** | Hilton Buenos Aires

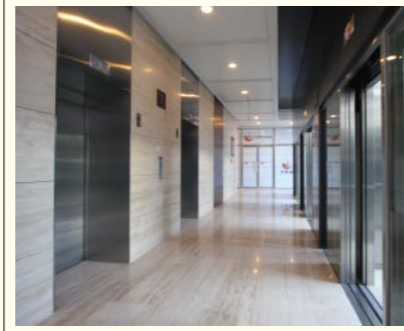


**Kuala Lumpur, Malaysia** | Berjaya Times Square



# Actual Installation Examples

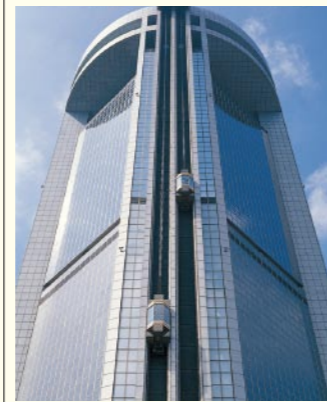
**Beijing, China** | CYTS Plaza



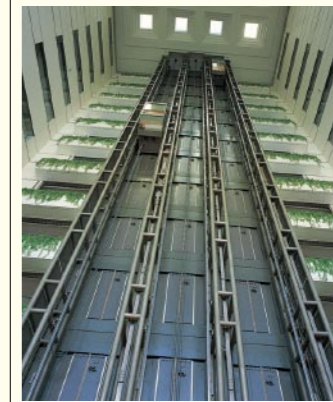
**Taiwan** | Core Pacific City



**Shanghai, China** | Jin Jiang Tower



**Taiwan** | Ambassador Hotel Hsinchu



# Actual Installation Examples

**Hong Kong** | Hong Kong International Airport



**Tokyo, Japan** | Sumida Riverside Hall



**Osaka, Japan** | Osaka Maritime Museum



**Aichi, Japan** | Midland Square



# Installation List

## Overseas

CUSTOMER	CAR SPEED (m/min)	CAPACITY (kg)	NBR. OF CARS	COUNTRY/ AREA
Asia Hotel	120	1,150	1	China
CYTS Plaza	150	1,350	6	China
Hua Ting Hotel	105	1,600	2	China
Jin Jiang Tower	105	1,600	2	China
Shanghai Jin Mao Building	105	1,600	2	China
Hong Kong International Airport	60	2,700	6	Hong Kong
Ambassador Hotel Hsinchu	105	1,150	3	Taiwan
Core Pacific City	105	1,600	1	Taiwan
Regency Hotel	90	750	4	Taiwan
Hotel Lotte Shinkan	120	1,800	3	Korea
Hotel Lotte World	45 / 210	1,350 / 1,350	2 / 1	Korea
Berjaya Times Square	60	1,150	3	Malaysia
Securities Commission	90	1,155	4	Malaysia
Wilayah Shopping Complex	60	1,000	1	Malaysia
Hotel Meridien	90	1,360	4	Singapore
Marina Mandarin Hotel	150	1,565	4	Singapore
Oriental Hotel	150	1,565	6	Singapore
Pan Pacific Hotel	150 / 210	1,565 / 1,565	4 / 4	Singapore
Central City Bangna	90	1,150	8	Thailand
Jewelry Trade Center	60	1,150	2	Thailand
Siam Paragon	105 / 105	1,600 / 1,800	2 / 2	Thailand
Abu Dhabi Trade Centre	45 / 105	1,600 / 1,600	2 / 2	UAE
Burj Al Arab	300	2,000	2	UAE
Dubai International Airport	60	1,135	4	UAE
Emirates Palace Hotel	105	1,000	4	UAE
Emirates Tower	240	1,400	4	UAE
City Centre	60	1,000	8	Qatar
Doha Sheraton Hotel	150	1,350	5	Qatar
Tat Tower	105	1,000 / 1,350	4	Turkey
Al Faisaliah Center	30 / 60 / 105 / 105	1,150 / 1,600 / 1,150 / 1,600	1 / 3 / 2 / 4	Saudi Arabia
Al-Mahmal Commercial Center and Tower	90	1,400	2	Saudi Arabia
First Makkah Residential and Commercial Complex	60 / 180	1,350 / 1,350	6 / 4	Saudi Arabia
Meridien Galleria	60	1,350	1	Egypt
Emerald Shapery Center	105 / 150	1,600 / 1,600	2 / 2	USA
Centro Asturiano	60	1,400	4	Mexico
Hotel Royal Zona Rosa	105	1,050	2	Mexico
Hotel Cosmos 100	90	900	1	Colombia
Hilton Buenos Aires	90	1,350	4	Argentina
ING House	96	1,250	2	The Netherlands
88 Wood Street	150	1,250	6	UK
100VE	96	1,600	6	UK

## Japan

CUSTOMER	CAR SPEED (m/min)	CAPACITY (kg)	NBR. OF CARS	AREA
Aquamarine Fukushima	90	1,600	1	Fukushima
Century Tower	90 / 150 / 300	600 / 850 / 850	2 / 6 / 6	Tokyo
Meguro Gajoen	60	1,600	1	Tokyo
Sumida Riverside Hall	180	1,600	2	Tokyo
Queens Square Yokohama	60	1,000	2	Kanagawa
Yokohama Grand Intercontinental Hotel	150	1,500	2	Kanagawa
Hotel New Otani Makuhari	240	1,350	1	Chiba
Hakuba Cortina Resort Villa	90	1,000	2	Nagano
Sunship Toyama	60	1,350	2	Toyama
Kagaya-Setsugekka	105	750	3	Ishikawa
Aichi Arts Center	150	1,600	3	Aichi
Higashiyama Sky Tower	90	1,200	2	Aichi
JR Central Towers	210	2,600	6	Aichi
Midland Square	360 / 90	2,150 / 1,600	2 / 3	Aichi
Obu City Public Office Building	90	1,150	2	Aichi
Asia Pacific Trade Center	105	1,600	3	Osaka
Big Step	105	1,350	3	Osaka
Hep Five	120	1,650	2	Osaka
Kansai International Airport	45	1,800	10	Osaka
Osaka Maritime Museum	60 / 45	1,800 / 1,300	3 / 3	Osaka
Hotel Kyocera	105	1,300	3	Kagoshima

### Points to Consider when Planning Installation

- Prices and delivery schedules vary greatly depending on such factors as design, materials, finish, car shape and installation conditions.
- Adequate space should be allowed for the elevator hoistway (inner dimensions, pit depth, overhead, etc.) so that no restrictions are placed on car shape or exterior trim design.
- If air conditioning equipment is installed on the car, it is requested that drainage facilities be placed in the pit.
- It is requested that for the outdoor enclosed model sufficient ventilation and air conditioning be provided so that the machinery installed in the elevator hoistway and machine room is not exposed to high temperatures as a result of direct sunlight. In addition, please consider the use of thermal insulation glass on the building side as required. (Customer is responsible for construction in each case.)  
In cold regions, measures should be taken to protect machinery against low temperatures and condensation. Measures include the use of thermal insulation glass on the building side and warm-air blowers for the elevator hoistway. (Customer is responsible for construction.)
- Mitsubishi Electric has also supplied many outdoor open observation elevators.
  - Please note that there are restrictions as to the shape, materials and design of outdoor models because special measures such as waterproofing and rustproofing are required.
  - Elevator operations will be interrupted during high winds for reasons of safety. Therefore, it is requested that a wind gauge and a dome for evacuation be installed. (Customer is responsible for construction.)
  - It is requested that the installation of this model elevator be avoided in cold regions because such accidents as cable slippage due to machinery icing are possible.

\* It is requested that Mitsubishi Electric specialists, through its affiliated companies, be consulted during the early stages of planning in regard to the aforementioned items and any other matters considered necessary.



Mitsubishi Elevator Inazawa Works has acquired ISO 9001 certification from the International Organization for Standardization based on a review of quality management. The company has also acquired environmental management system standard ISO 14001 certification.



for a greener tomorrow

Eco Changes is the Mitsubishi Electric Group's environmental statement, and expresses the Group's stance on environmental management. Through a wide range of businesses, we are helping contribute to the realization of a sustainable society.

**MITSUBISHI ELECTRIC CORPORATION**  
HEAD OFFICE : TOKYO BLDG., 2-7-3, MARUNOUCHI, CHIYODA-KU, TOKYO 100-8310, JAPAN

Visit our website at:  
<http://www.mitsubishielectric.com/elevator/>

**⚠ Safety Tips:** Be sure to read the instruction manual fully before using this product.